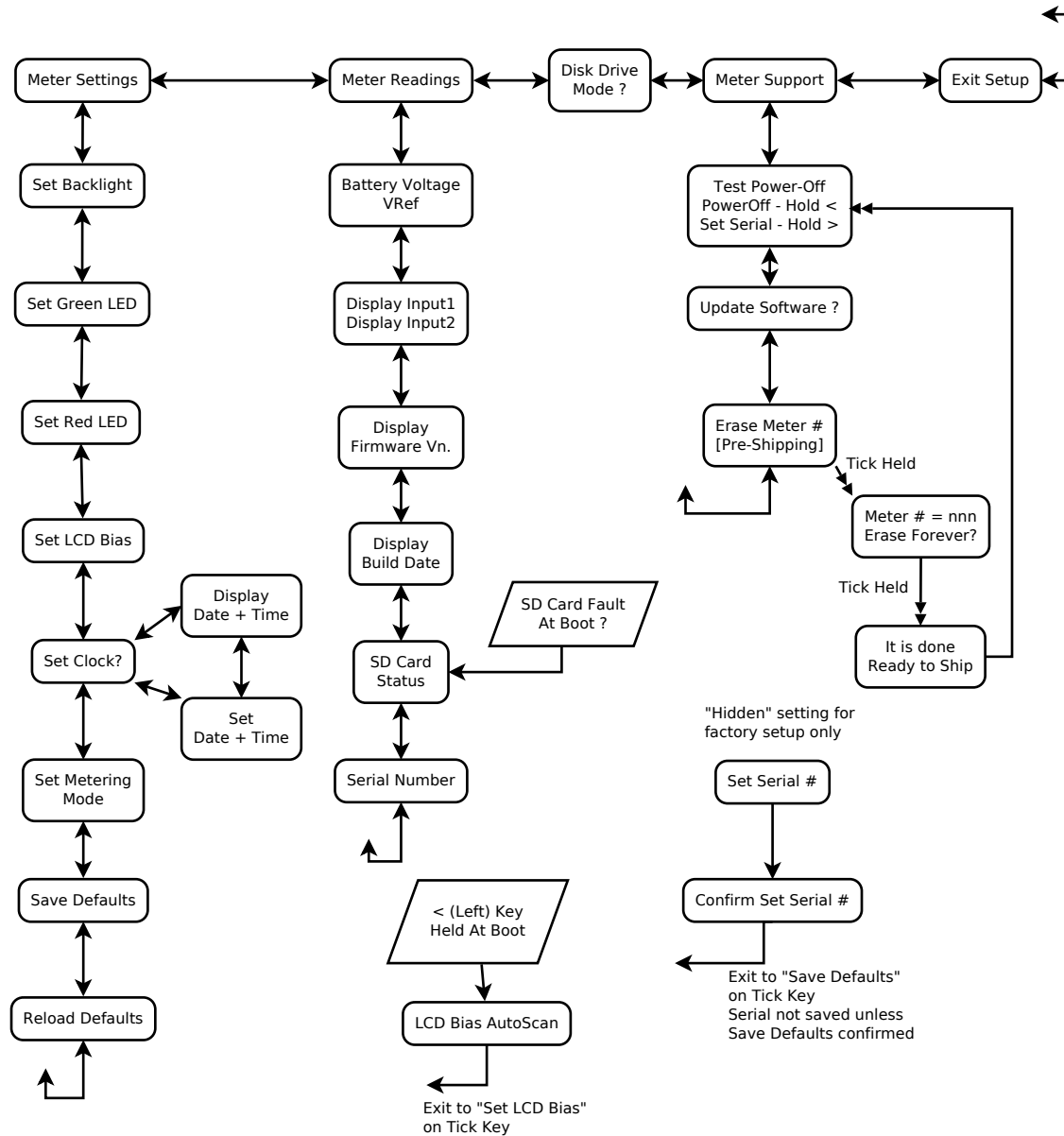


Anode Meter Setup Mode Layout
Vn 2.3 Current 17 April 2014



Setup mode is entered by holding Up and Down keys simultaneously in Normal mode.

The same method can be used to toggle from Setup back into Normal mode from most Setup states.

For normal power-off, hold Left and Right arrow buttons.
On Vn2.2 hardware, emergency power-off by holding Left, Right and Up arrows.
[for use only if device is locked up]